



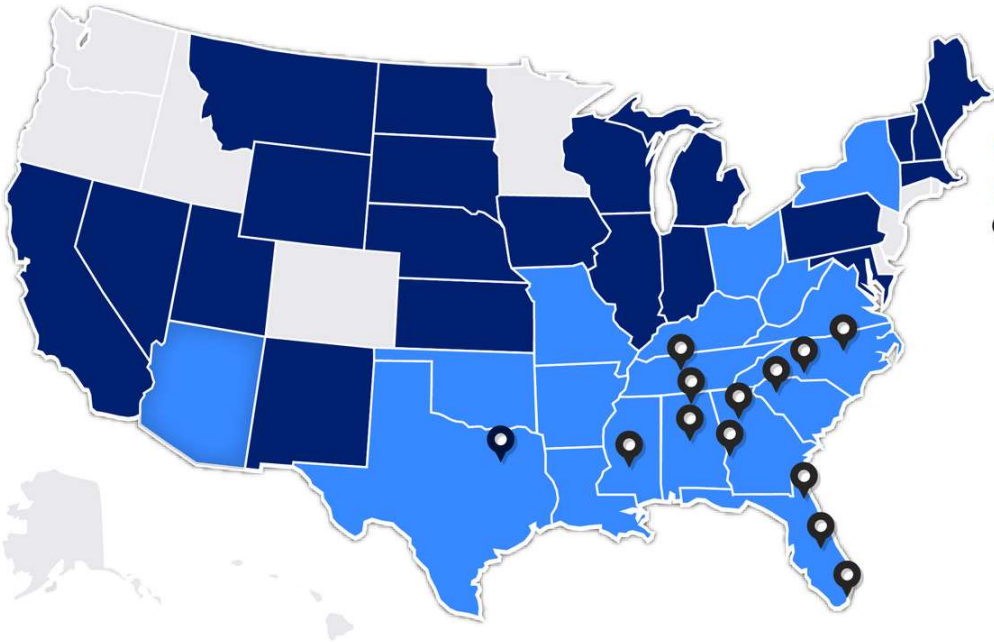
**BRASFIELD  
& GORRIE**

Montgomery ASCE 2024

# West Alabama Highway Alternative Delivery



# Introduction



- CURRENT WORK
  - PERFORMED WORK
  - 📍 OFFICES
- Atlanta
  - Birmingham
  - Charlotte
  - Columbus
  - Dallas
  - Greenville
  - Huntsville
  - Jackson
  - Jacksonville
  - Miami
  - Nashville
  - Orlando
  - Raleigh

**ENR**  
Engineering News-Record  
2023

**NO. 1**

**TOP SOUTHEAST CONTRACTOR**

**4K**  
EMPLOYEES

**220+**  
ACTIVE JOBSITES

**1964**  
60 YEARS IN BUSINESS

**13**  
FULL-SERVICE OFFICES

**\$6.1B**  
PROJECTED REVENUE

**0.43**  
2023 EMR



**BRASFIELD  
& GORRIE**

# Overall Project Information





# Existing Conditions vs New Construction

**Before:**



**After:**



# Project Map – Work Packages

## West Alabama Highway Work Packages

# Work Package

North Division

South Division

6.3 miles 4986+00 to 5319+50

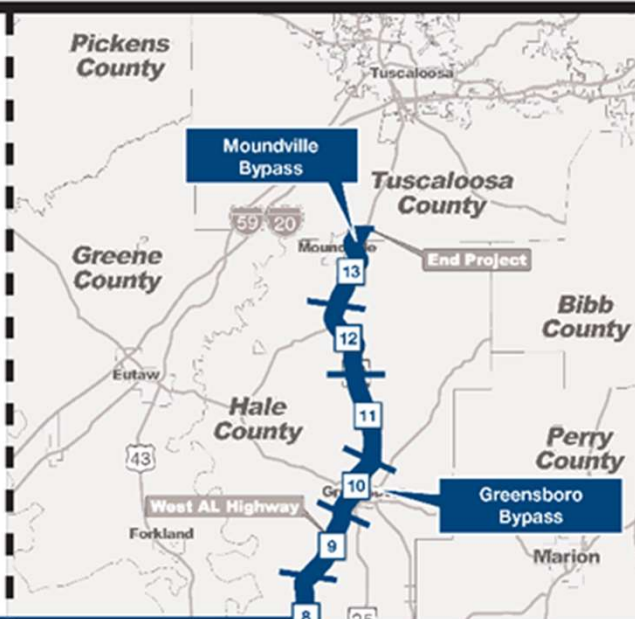
6.2 miles 4658+00 to 4986+00

8.4 miles 4215+00 to 4658+00

5.0 miles 3950+00 to 4215+00

6.4 miles 3610+00 to 3950+00

6.9 miles 3245+00 to 3610+00



1.7 miles 3154+00 to 3245+00

4.7 miles 2908+00 to 3154+00

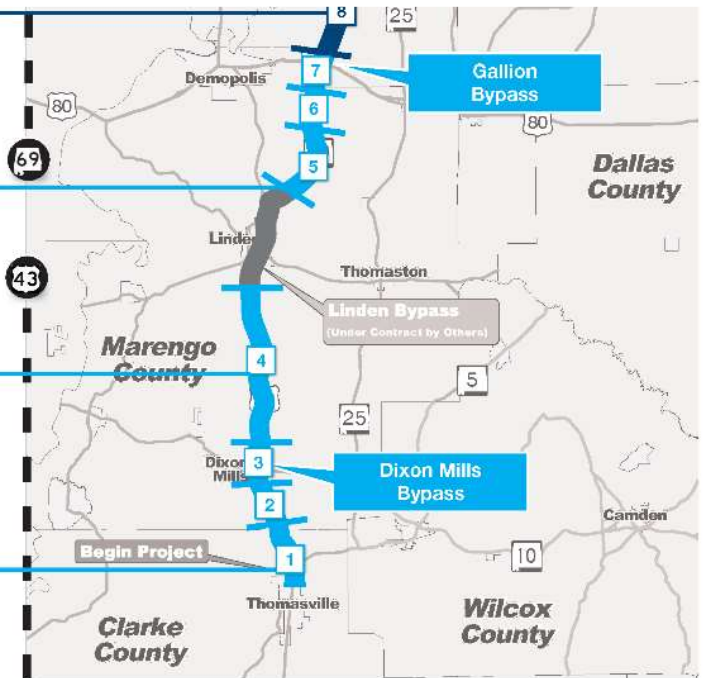
5.6 miles 2614+68.35 to 2908+00

13.7 miles 1522+27.14 to 2245+87.6

2.1 miles 1412+74.84 to 1522+27.14

3.9 miles 1206+00 to 1412+74.84

3.8 miles 1006+74.16 to 1206+00



**BRASFIELD & GORRIE**  
GENERAL CONTRACTORS



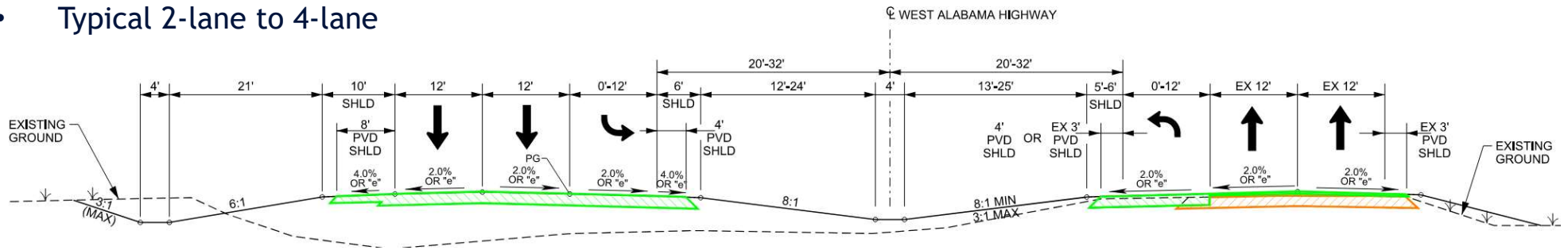
MOBILE PROJECT TO REBUILD ALABAMA



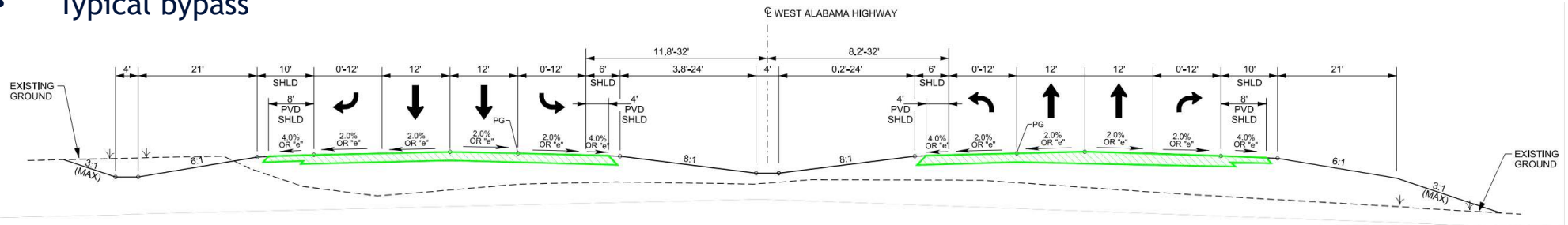
**WEST ALABAMA HIGHWAY**  
Thomasville to Tuscaloosa

# Quantities

- Typical 2-lane to 4-lane



- Typical bypass



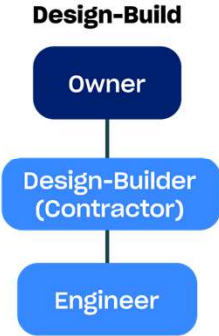
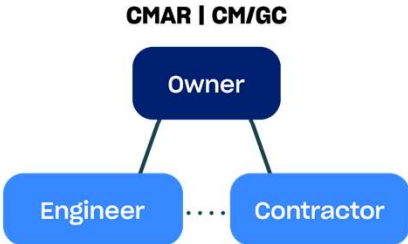
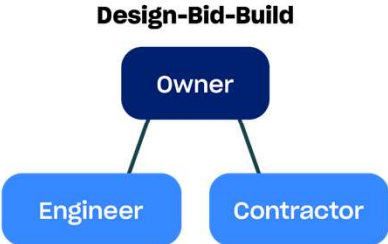
**600,000**  
TONS  
STONE BASE

**1.5M**  
TONS  
ASPHALT

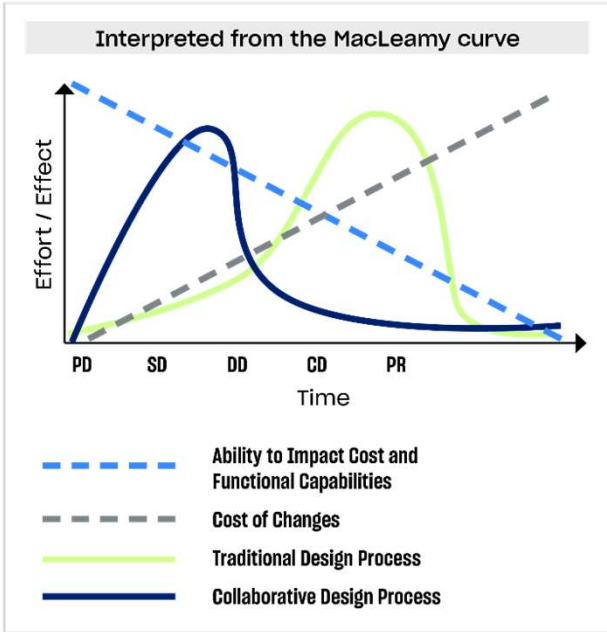
**40,000**  
LF RCP/  
CULVERTS

**25**  
BRIDGES

# Project Delivery Comparison

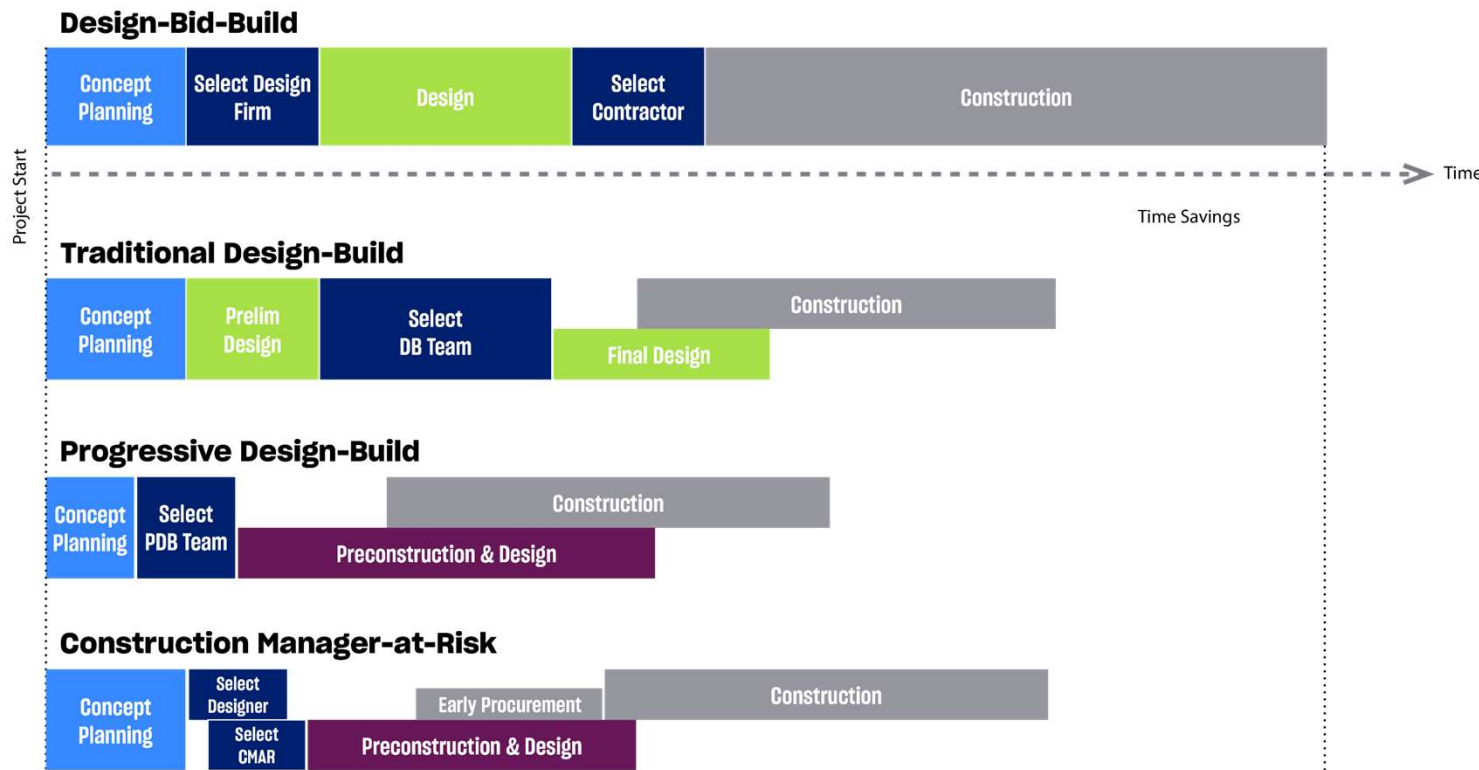


Design Engagement Impact Timeline





# Project Delivery Comparison



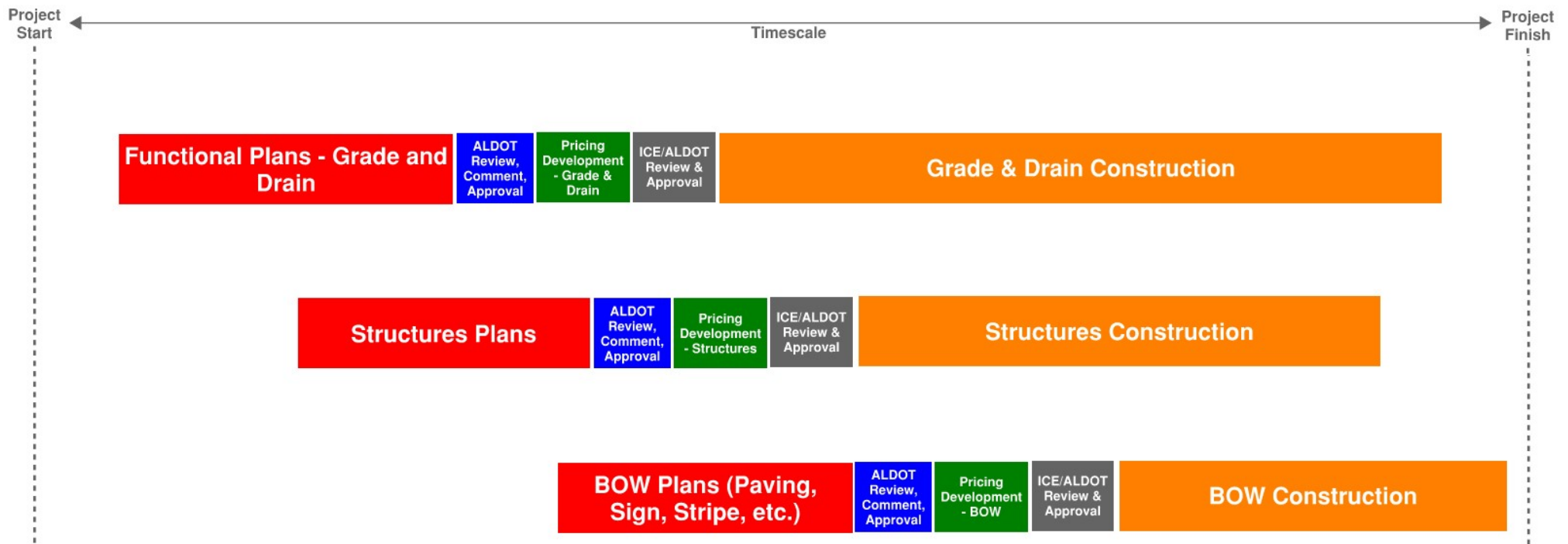
## Benefits of Design-Build

- Time savings
- Increased collaboration
- Mitigate inflation/supply chain disruptions
- Earlier budget information
- Owner retains more control in PDB

## Benefits of CMAR

- Similar to Design-Build
- Owner retains additional control versus traditional Design-Build

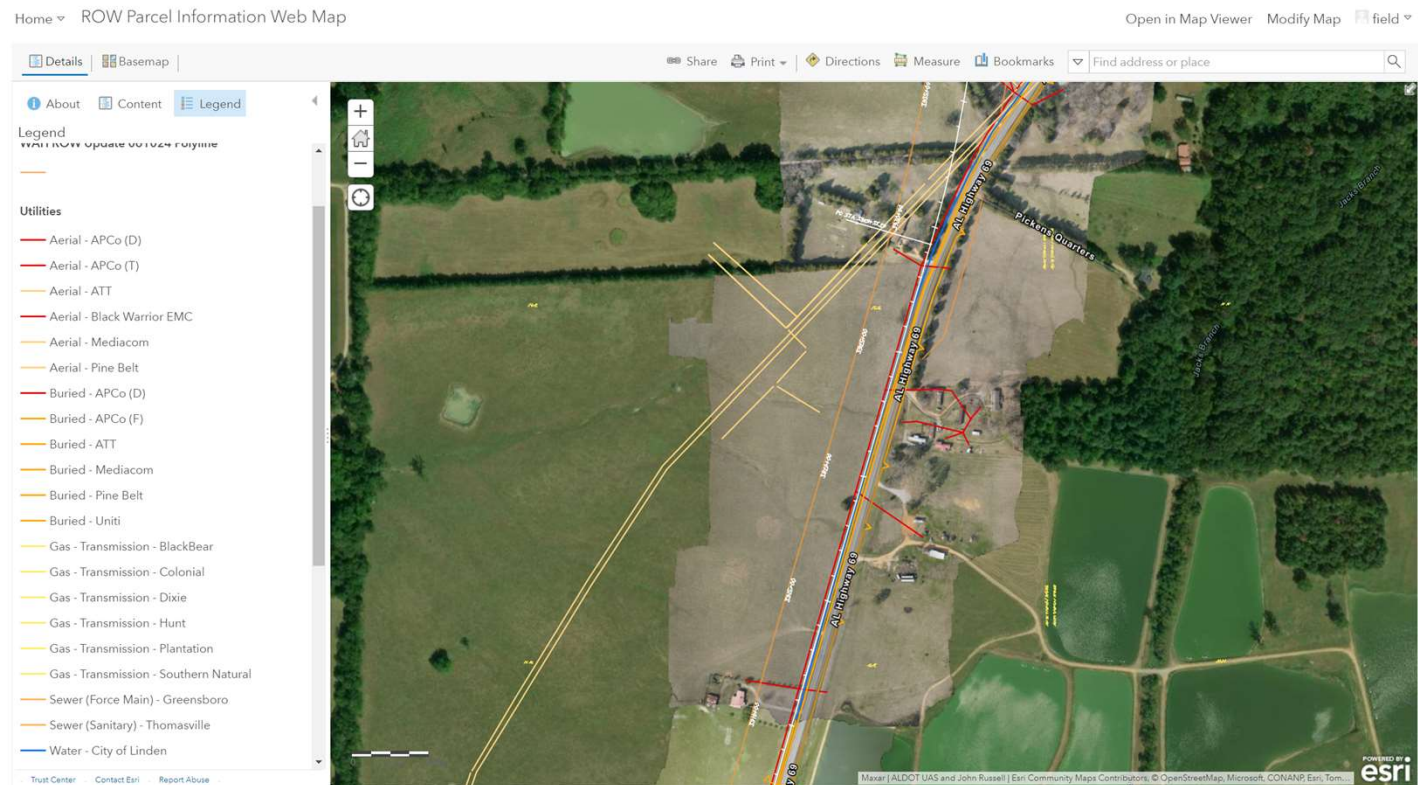
# WAH Progressive Design-Build Method



# Design & Process Innovations

## GIS System

- Installed Work Tracking
- ROW Status
- Utility Locations (new & existing)
- New Design Overlay
- Structure Demo Info
- Historical Structures
- ESA's

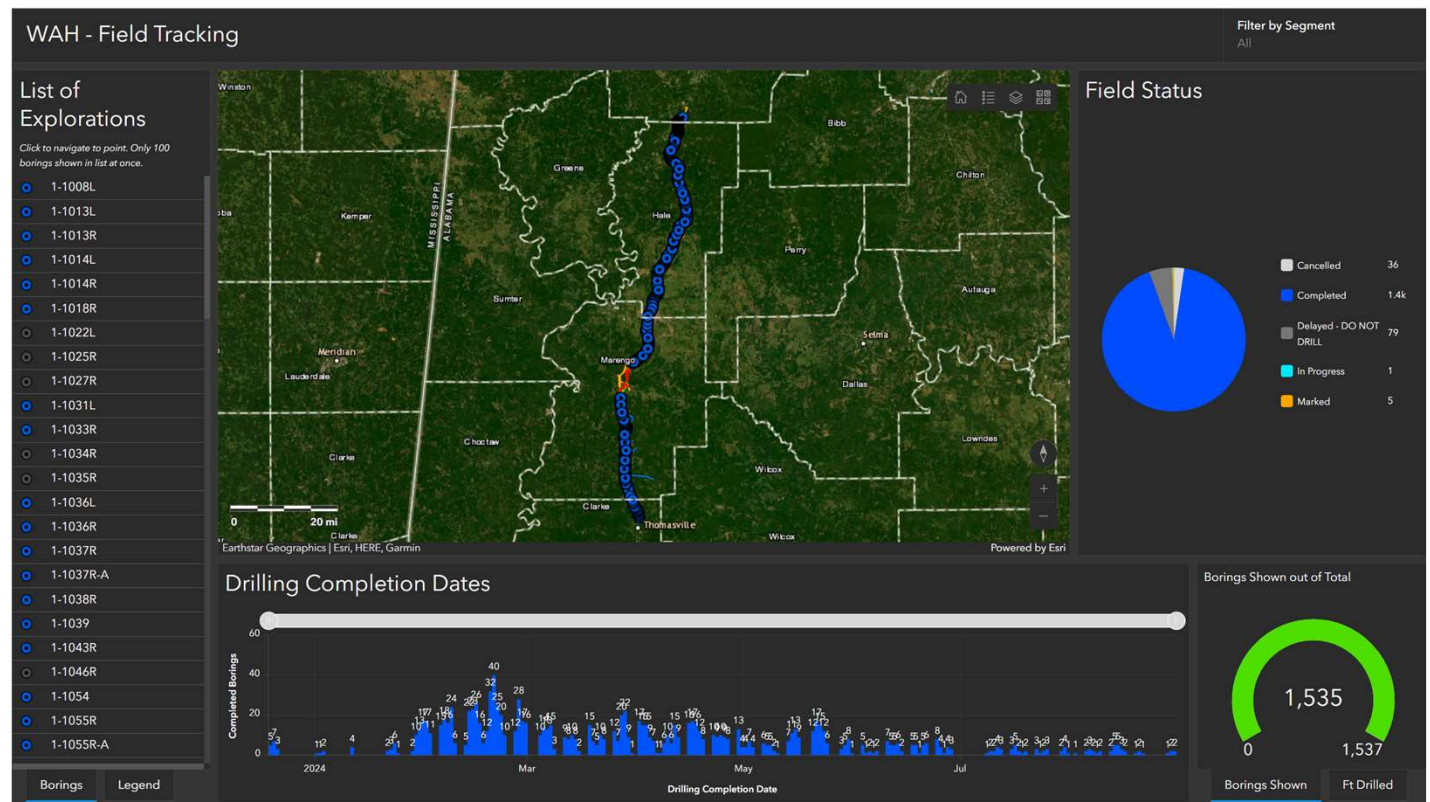


# Design & Process Innovations

## Dashboard Development

- Design
- Design Field Work
- Operations
  - Safety
  - Schedule
  - Cost
  - Quality

Use as a high-level viewer/reporting tool

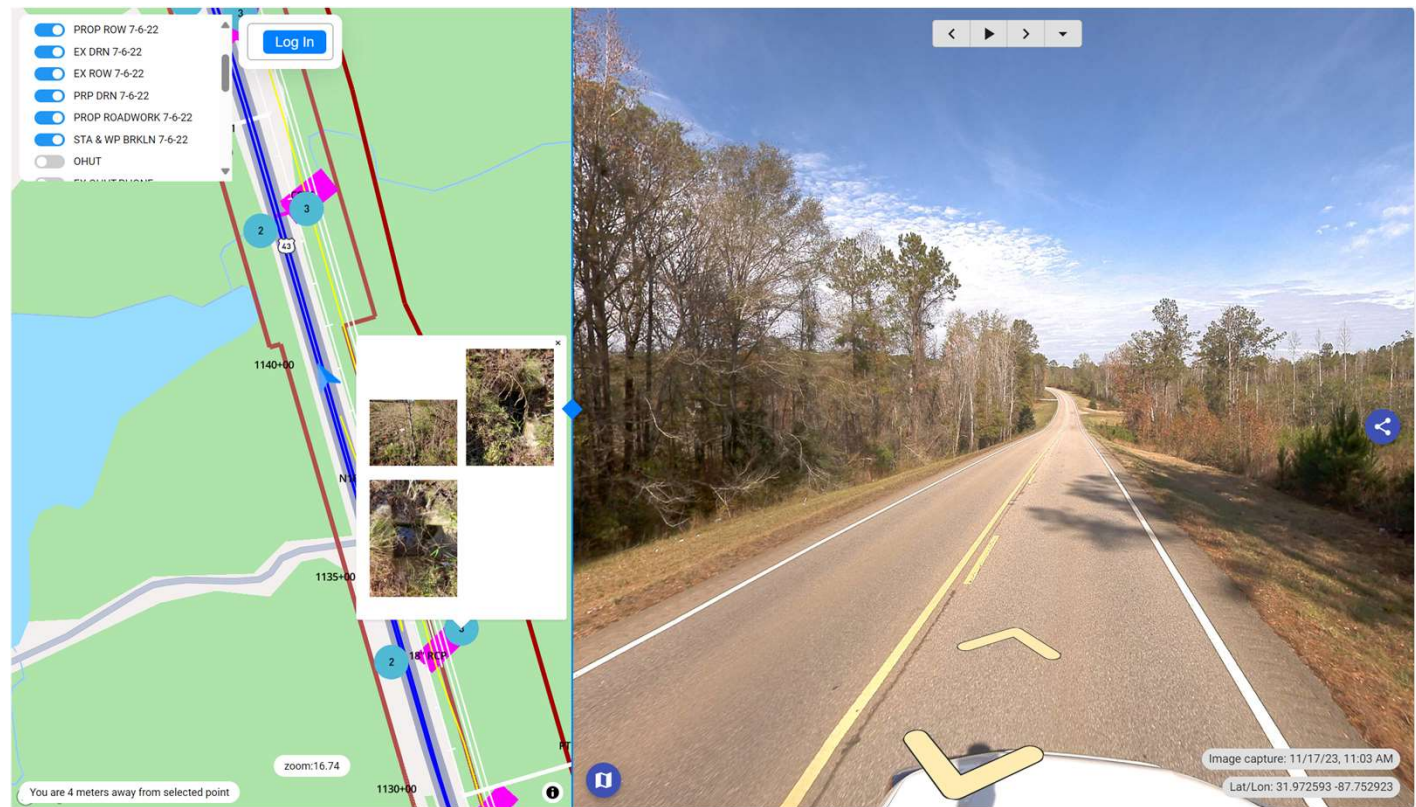


# Design & Process Innovations

## Existing Conditions Viewer

- Overlays New Design
- Shows existing conditions at any location
- Add photos or pipe inlets/structures/etc.

**Saves additional site visits for verification**



# Design & Process Innovations

## Electronic Document Management System (EDMS)

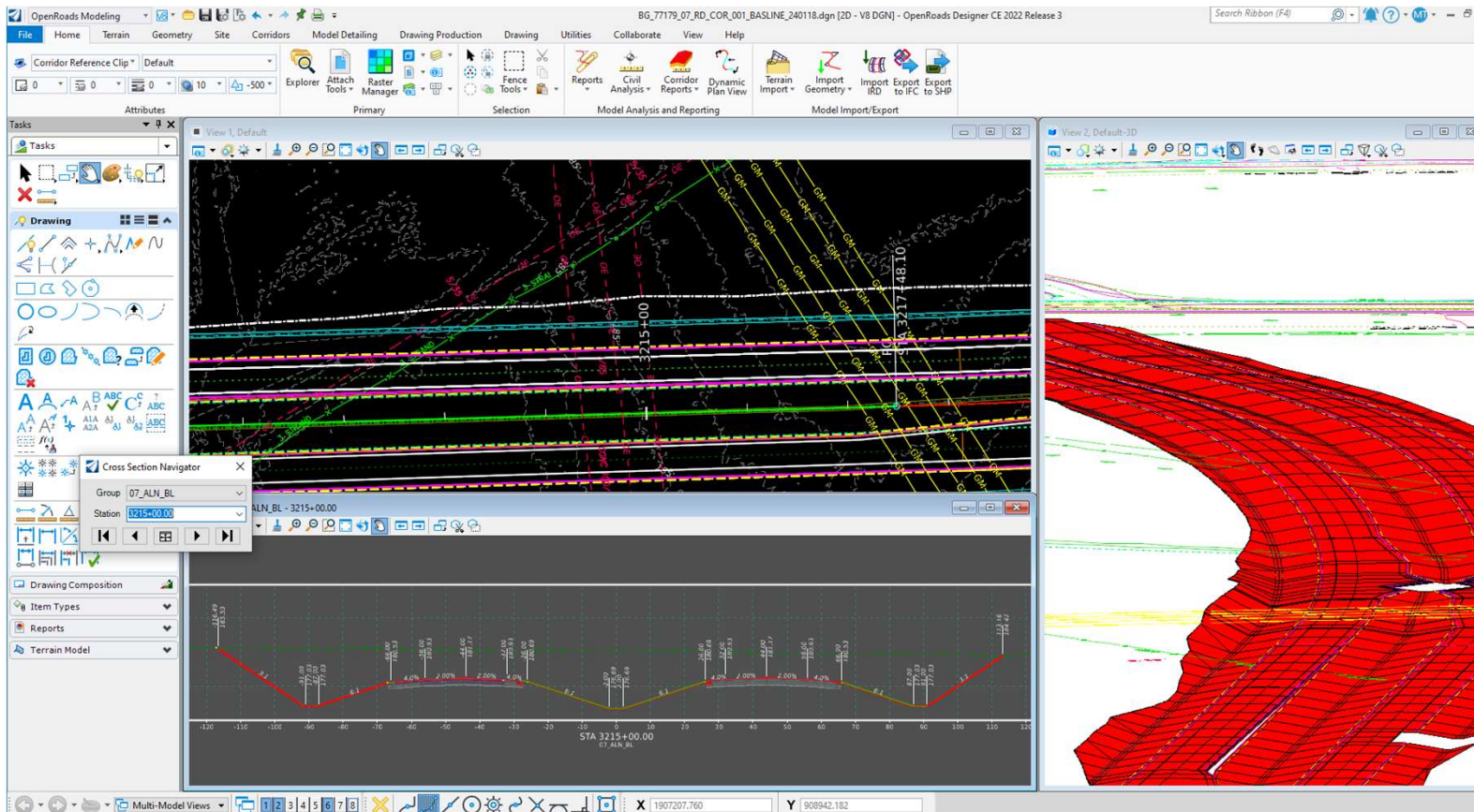
- Procore
- DB Team (B&G and HDR) and ALDOT all in same environment
- Subcontractors will be added during Construction Phase

## Construction Engineering & Inspection (CE&I)

- Contracted through Design-builder
- All ALDOT standard forms have been digitized
- Shared and archived in Procore



# Technology & Innovation



- OpenRoads 3D design software
- Utility relocations incorporated into design

# WAH Schedule Milestones

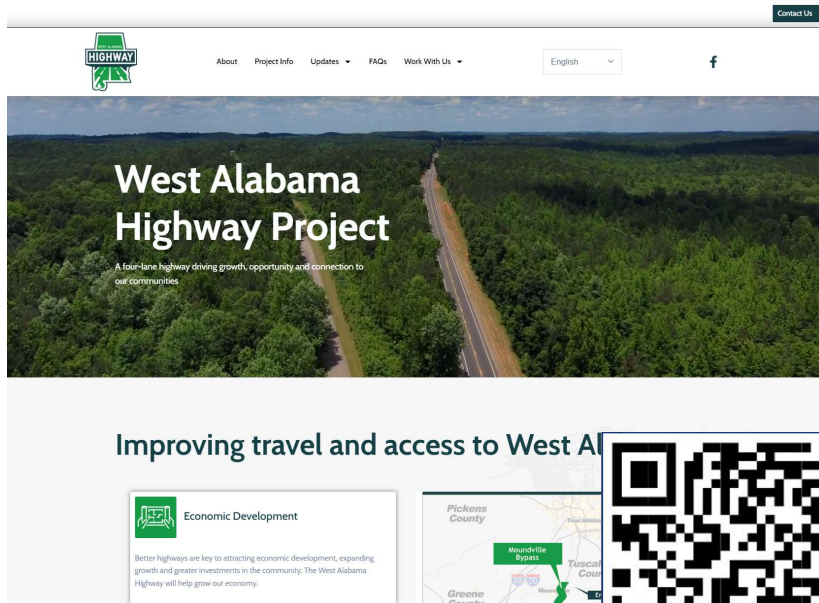
- NTP for Design & Preconstruction | October 24, 2023
- Functional Design | Complete Q1 2025
- Utility Relocation | Q2 2024 start
- Structure Demolition | Q3 2024 start
- Grade & Drain | Q2 2025
- Structures Start | Q2/Q3 2025
- Right of Way | 96% purchased





# Project Updates

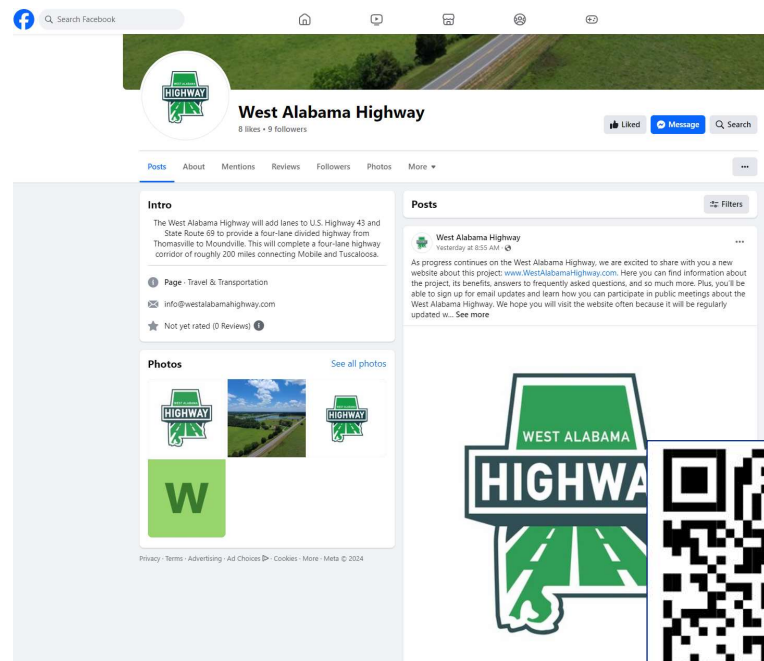
 [www.westalabamahighway.com](http://www.westalabamahighway.com)



The screenshot shows the website's header with a navigation menu (About, Project Info, Updates, FAQs, Work With Us), a language selector (English), and a Facebook icon. The main banner features an aerial view of a highway through a forest with the text "West Alabama Highway Project" and "A four-lane highway driving growth, opportunity and connection to our communities." Below the banner, there is a section titled "Improving travel and access to West A" with a sub-section for "Economic Development" and a map of the project area in Pickens and Greene counties.



# Facebook



The screenshot shows the Facebook profile for "West Alabama Highway" with 8 likes and 9 followers. The page includes a cover photo of a highway, a profile picture with the project logo, and a post from yesterday at 8:55 AM. The post text reads: "As progress continues on the West Alabama Highway, we are excited to share with you a new website about this project: [www.WestAlabamaHighway.com](http://www.WestAlabamaHighway.com). Here you can find information about the project, its benefits, answers to frequently asked questions, and so much more. Plus, you'll be able to sign up for email updates and learn how you can participate in public meetings about the West Alabama Highway. We hope you will visit the website often because it will be regularly updated w... See more". The page also features a "Photos" section with three images and a large "WEST ALABAMA HIGHWAY" logo with a hand cursor pointing to it.





**BRASEFIELD  
& GORRIE**

**Questions?**

