



# *Presentation to Montgomery Branch ASCE*

“Case Studies of Industrial Parks”

By Joe Meads, P.E.

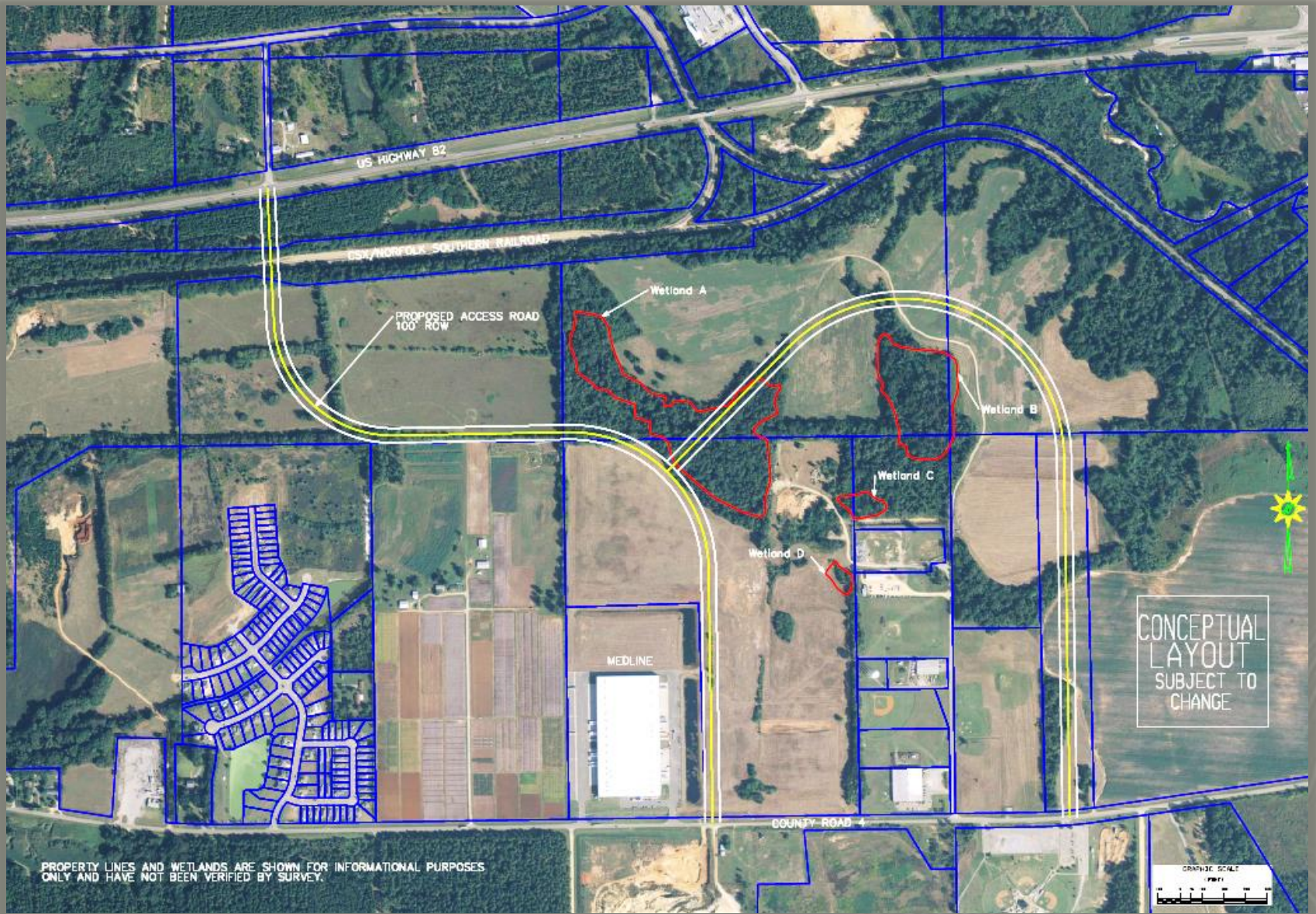
**SAIN**  
associates

ENGINEERING BETTER PARTNERSHIPS

# A MASTER PLAN FOR SOUTH INDUSTRIAL PARK



South Industrial Park  
Prattville, Alabama





# Industrial Access Road to Hardie Corporation



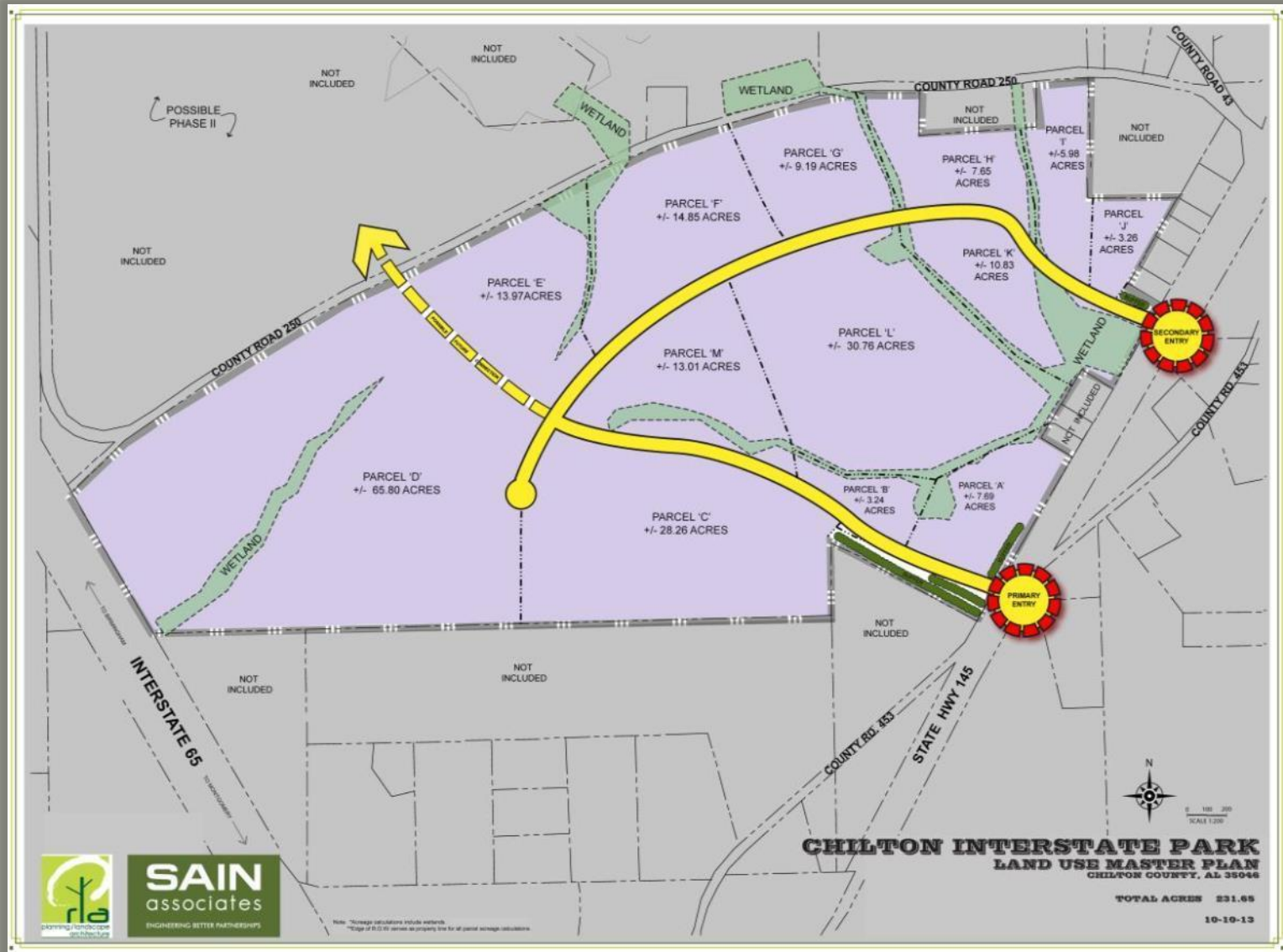
**SAIN**  
associates

**South Industrial Park  
Prattville, Alabama**



**SAIN**  
associates

**South Industrial Park  
Prattville, Alabama**



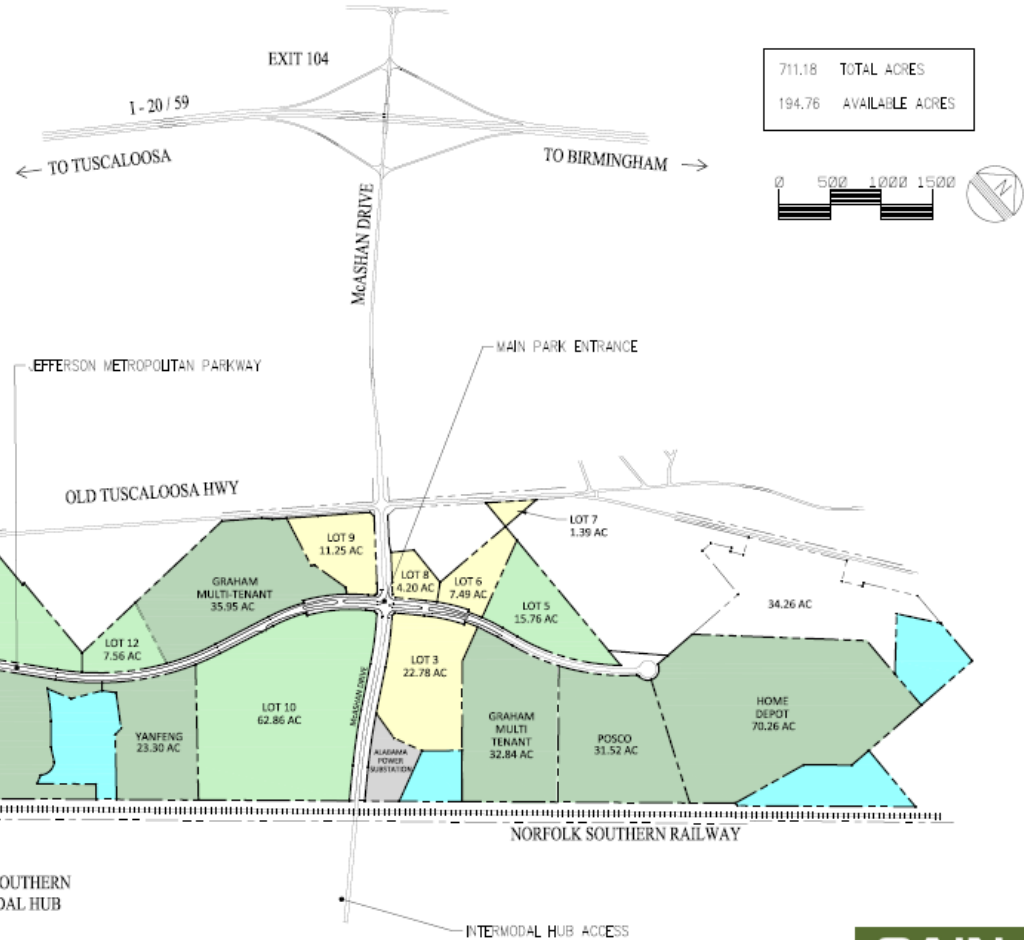
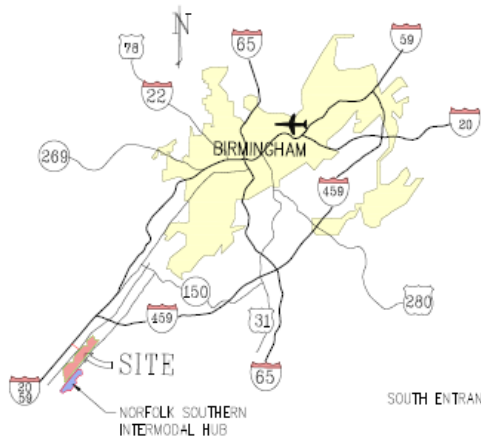
# Chilton Interstate Park

## Chilton County, Alabama



**Chilton Interstate Park, Chilton County, Alabama**





711.18 TOTAL ACRES  
194.76 AVAILABLE ACRES



STORMWATER DETENTION OR WETLAND/MITIGATION AREA  
MIXED USE



JEFFERSON COUNTY  
ECONOMIC and INDUSTRIAL  
DEVELOPMENT AUTHORITY  
(205) 943-4794

NORFOLK SOUTHERN  
INTERMODAL HUB

INTERMODAL HUB ACCESS



# MASTER PLAN JEFFERSON METROPOLITAN PARK

## McCalla, Alabama





**SAIN**  
associates

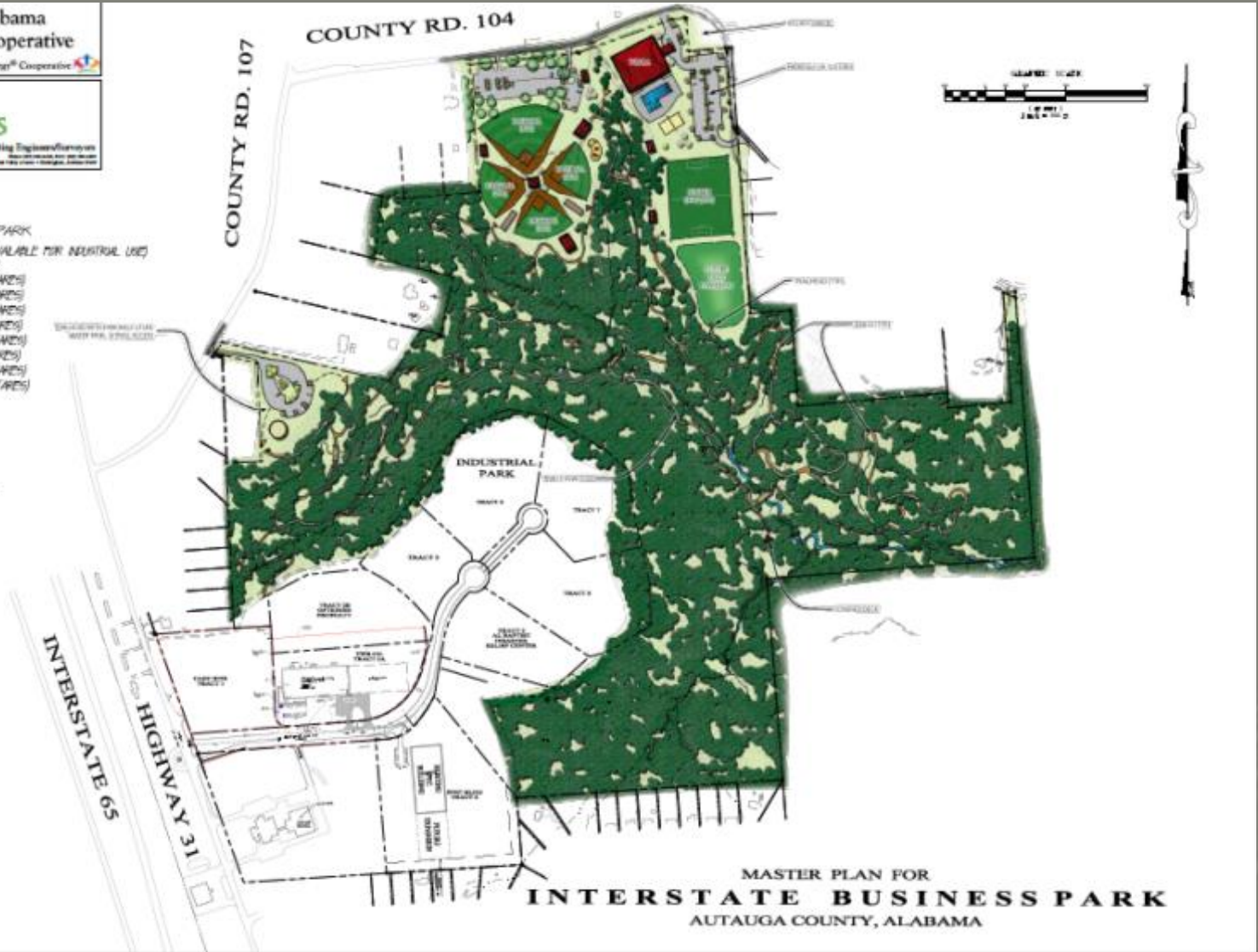


**SUMMARY**

**INDUSTRIAL/RETAIL PARK**

Tract 1	58 - (NOT AVAILABLE FOR INDUSTRIAL USE)
Tract 2A	58 - TRB 62
Tract 2B	58 (2.36 ACRES)
Tract 3	58 (2.88 ACRES)
Tract 4	48 (2.34 ACRES)
Tract 5	44 (2.84 ACRES)
Tract 6	51 (4.05 ACRES)
Tract 7	57 (2.5 ACRES)
Tract 8	72 (2.54 ACRES)
<b>Total</b>	<b>± 54 (± 21.7 ACRES)</b>

PARK	± 85
TOTAL SIZE	± 141
LT. OF ROAD	± 2,500
ROW	± 4 ACRES







## Eligible Applicants

Local Economic Development Organizations

Industrial Development Agencies

Public Authorities

Chambers Of Commerce

Municipal And County Governments

## General Site Criteria

Property Ownership And Control

Site Characteristics

Utility Status

Environmental And Geotechnical Due Diligence

Joe Meads, P.E.  
joemeads@sain.com

